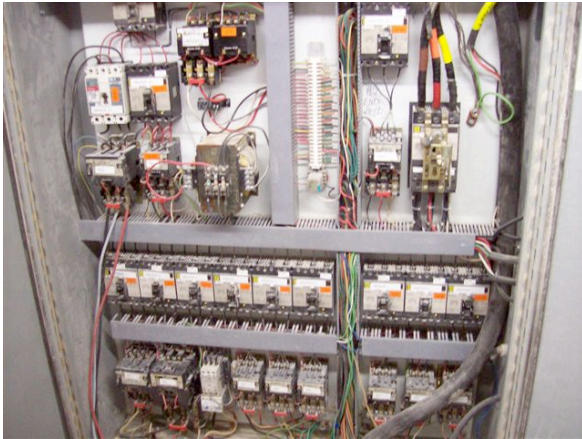




TOOLBOX TALK: Approaching Live (or potentially live) Electrical Parts
BY: William Russell, APAC | December 2016



The first consideration when approaching any electrical part is determining whether or not the part is energized or live. In general, **all electrical parts should be assumed to be energized** unless they have been checked and confirmed to be de-energized by a qualified person.

Energized or de-energized? At left are exposed electrical conductors which must be tested by a qualified person before they are confirmed to be de-energized.

Do you have your PPE on when opening the cabinet?



NOTE: For electrical repair (replacing light fixtures, working on breakers, connecting and disconnecting electrical equipment, work inside an electric motor starter, etc.), verification of de-energizing must be confirmed by the use of a volt meter by an authorized employee.

APPROACHING “EXPOSED” ENERGIZED ELECTRICAL CONDUCTORS:

Persons must not approach within the Flash Protection Boundary unless they are wearing appropriate arc rated personal protective equipment and are qualified for the work being performed.

Typical electrical work activities performed by OMG SE personnel that may require an approach to energized parts or circuits can include:

- 1) Circuit breaker operation with covers off or open
- 2) Voltage Testing on or near live parts
- 3) Troubleshooting on or near live parts

Remember, a person can be considered qualified with respect to certain equipment and methods but still be unqualified for others.

Generally, at our facilities, the PPE required to approach 240V – 600V electrical parts is as follows:

- Arc-rated long sleeve shirt
- Arc-rated pants
- Arc-rated coveralls, jacket, coat, etc.
- Hard Hat with Arc-rated face shield
- Safety Glasses or safety goggles
- Hearing protection (ear canal inserts)
- Leather gloves over rubber insulating gloves
- Leather work boots



If you are not sure of the requirements for approaching electrical parts in your work environment, then YOU ARE NOT QUALIFIED FOR THAT WORK. Please contact your Supervisor or EHS Manager for more information.